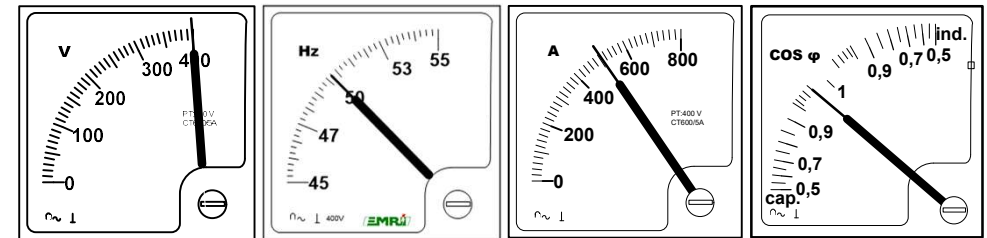
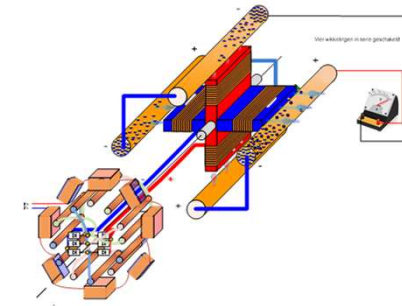
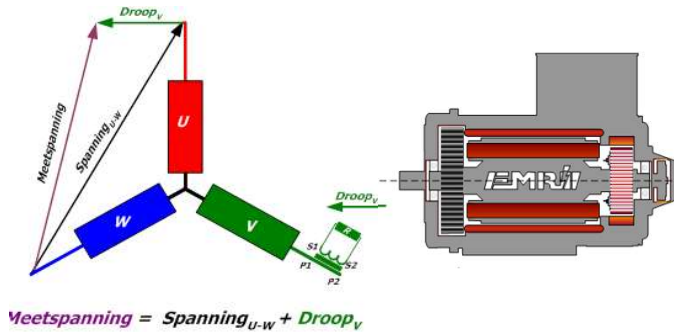


TRAINING GENERATOR TECHNOLOGY





EMRI - TRAINING GENERATOR TECHNOLOGY

GENERATOR TRAINING

AS EXPERTS IN POWER OF SYNERGY WE SHARE OUR KNOWHOW WITH OUR CUSTOMERS BY MEANS OF OUR TRAINING FACILITY, SPECIALLY EQUIPPED TO TRAIN ENGINEERS WHO ARE WORKING IN POWER GENERATION WITH SYNCHRONOUS GENERATORS.

THE TRAINING IS THEORETICAL AND PRACTICE.

THE EMRI TRAINING FACILITY IS EQUIPPED WITH REAL GENERATORS, VOLTAGE REGULATORS AND ELECTRICAL PRIME MOVERS. THE VARIOUS LOADS AND THE TWO GENERATOR PANELS FOR EVERY POSSIBLE MODE OF OPERATION, CREATE AN UNIQUE POWERPLANT, SAFE AND OUTSTANDING FOR EDUCATION.

THE TRAINING IS VALUABLE FOR ALL PEOPLE INVOLVED IN THE DAILY BUSINESS OF POWER GENERATION WITH PRIME MOVERS AND SYNCHRONOUS MACHINES, LIKE ENGINE MECHANICS, ELECTRICAL ENGINEERS, DESIGN ENGINEERS, GENERAL SERVICE ENGINEERS, OPERATORS AND COMMISSIONERS.

KNOWING HOW IT SHOULD WORK IS 50 % OF THE SOLUTION.

THIS SENTENCE INDICATES THE VALUE OF THE TRAINING. THE THEORY AND PRACTICE WITH THE HIDDEN, SIMULATED FAULTS TO SOLVE, COMBINED WITH THE LEARN - DO MODE, RESULTS INTO A HIGH RATING BY THE PARTICIPANTS AND RAISES THEIR SKILLS AND CONFIDENCE.

CUSTOMIZATION

FOR GROUPS, WHO OPERATE IN A SPECIAL DISCIPLINES OR BRANDS, SUBJECTS CAN BE INTEGRATED AND PARTICULAR PRACTICAL PROBLEM CAN BE TRAINED.





APPLICATION FORM TRAINING GENERATOR TECHNOLOGY

Training Information

The training takes place over two consecutive days at the EMRI training facility.

It combines theoretical instruction with hands-on practice using generator sets and various load scenarios to reinforce the concepts learned.

Participants are welcomed each day at 9:00 AM at our facility in Ede.

A lunch break is scheduled around 1:00 PM and is included in the training fee. The training concludes between 3:30 PM and 4:00 PM, depending on the day's progress.

Please note: lodging is not included but can be arranged at a hotel in Ede or nearby.

Upon receiving your application, we will send a confirmation.

Cancellations are free of charge if made at least three weeks before the scheduled date.

A cancellation fee of €250 will apply if the cancellation is made one week before the scheduled date.

For cancellations made within one week of the scheduled date, or in case of a no-show, the full training fee will be charged.

However, it is possible to send a substitute participant, provided this is communicated in advance.

Training dates can be scheduled for individual groups or companies, or based on sufficient participant interest.



COSTS FOR TRAINING GENERATOR TECHNOLOGY

Number of participants	2025/2026
1	€ 2.953,58
2	€ 4.808,16
3	€ 5.907,16
4	€ 6.676,46
5	€ 7.401,82
6	€ 8.143,66



Marelli

CATERPILLAR



SIEMENS





APPLICATION FOR TRAINING GENERATOR TECHNOLOGY

Below persons are scheduled for training generator technology, date :

1:

2:

3:

4:

5:

6:





EMRI ELECTRONICS B.V.

MORSESTRAAT 10

NL - 6716 AH EDE THE NETHERLANDS

TEL. +31 (0)318 620 427

FAX +31 (0)318 634 615

EMAIL: INFO@EMRI.NL

WWW.EMRI.NL

